

YELLOW team
ЖОВТА команда

Ka LUSH —
friendly space of common care

SWOT

Strengths

- Existing building — cost-saving on new construction
- Region with low risk of active hostilities
- Potential for landscaping and improvement
- Positive community perception of the project

Weaknesses

- Dilapidated condition, requires renovation
- Possible issues with utilities and infrastructure
- Bureaucratic hurdles in securing property rights
- Outdated layout — limited functionality

Opportunities

- Community and volunteer engagement
- Grants and donor support available
- Greening and creation of open spaces
- Potential for multifunctional transformation

Threats

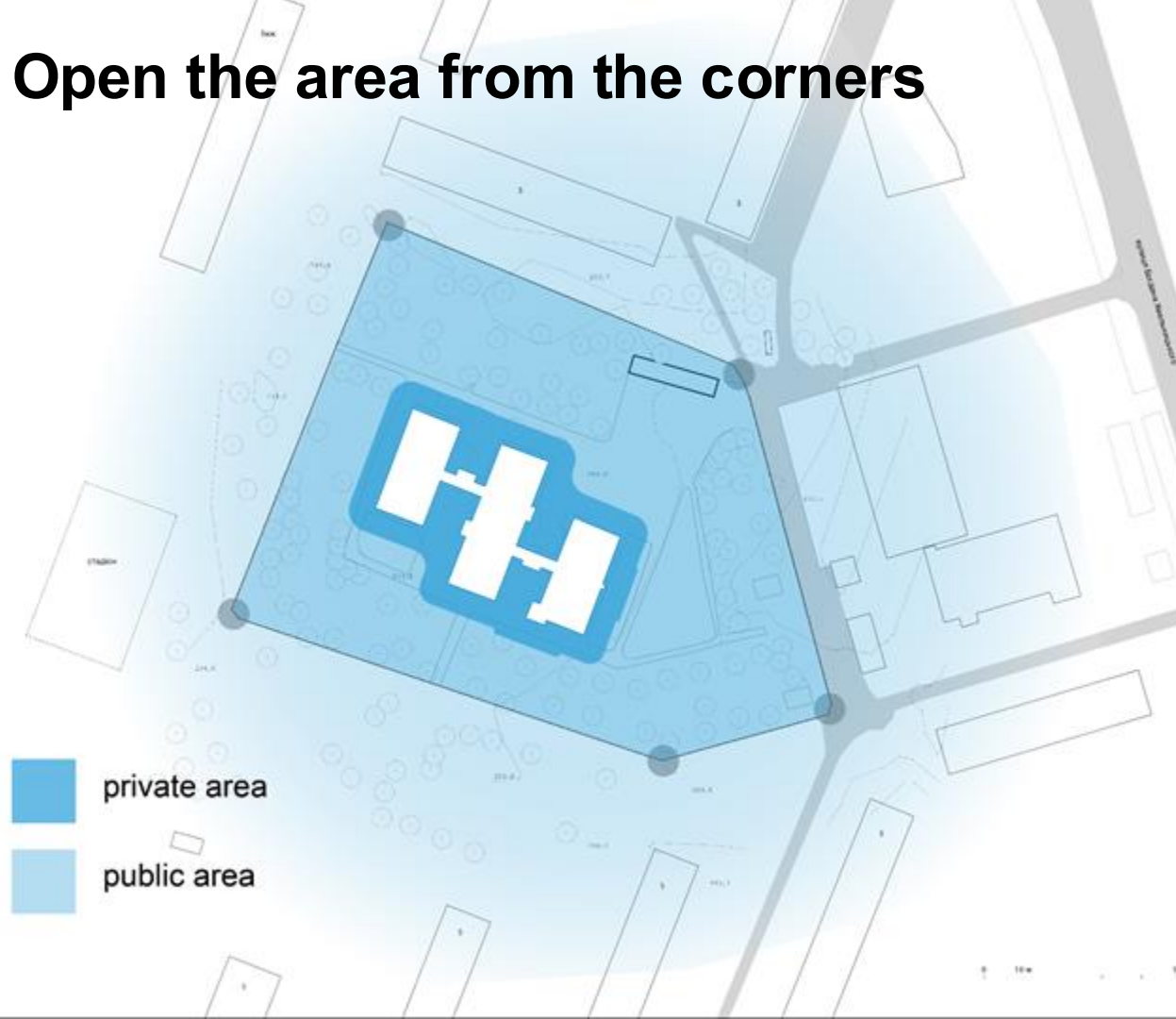
- Vandalism and maintenance challenges
- Economic instability and inflation
- Difficulty securing long-term funding

Zirochka: A Space for All

We talked to residents of the surrounding buildings, people who transited through the “Zirochka” space, immigrants from at-risk areas who will become future direct consumers of the newly reborn space, with a new function of long-term rental housing. And based on observations and conversations, we want to create a living space that is sensitive to all groups of consumers. Safety, functionality, activation of corner entrances and zoning into more closed areas for residents, directly near the house, common recreation areas with different functions further away, while erasing clear boundaries between the territory of the former Zirochka kindergarten and the areas of the city and school nearby. Thus, transforming the quarter into a space of shared care and use.



Open the area from the corners



We are activating the site for residents' use and opening up the corners.

Pedestrians and cars: balance



As a result of the research and analysis of the territory of the “Zirochka” kindergarten and its surroundings, we propose not to consider the parking area as a single large site. Instead, the proposal involves distributing parking spaces across the nearby areas, creating several smaller parking zones.

Activity zone



The active zone is connected to the school stadium and sports ground. It can accommodate sports fields, a workout area, and spaces for skateboarding and roller skating



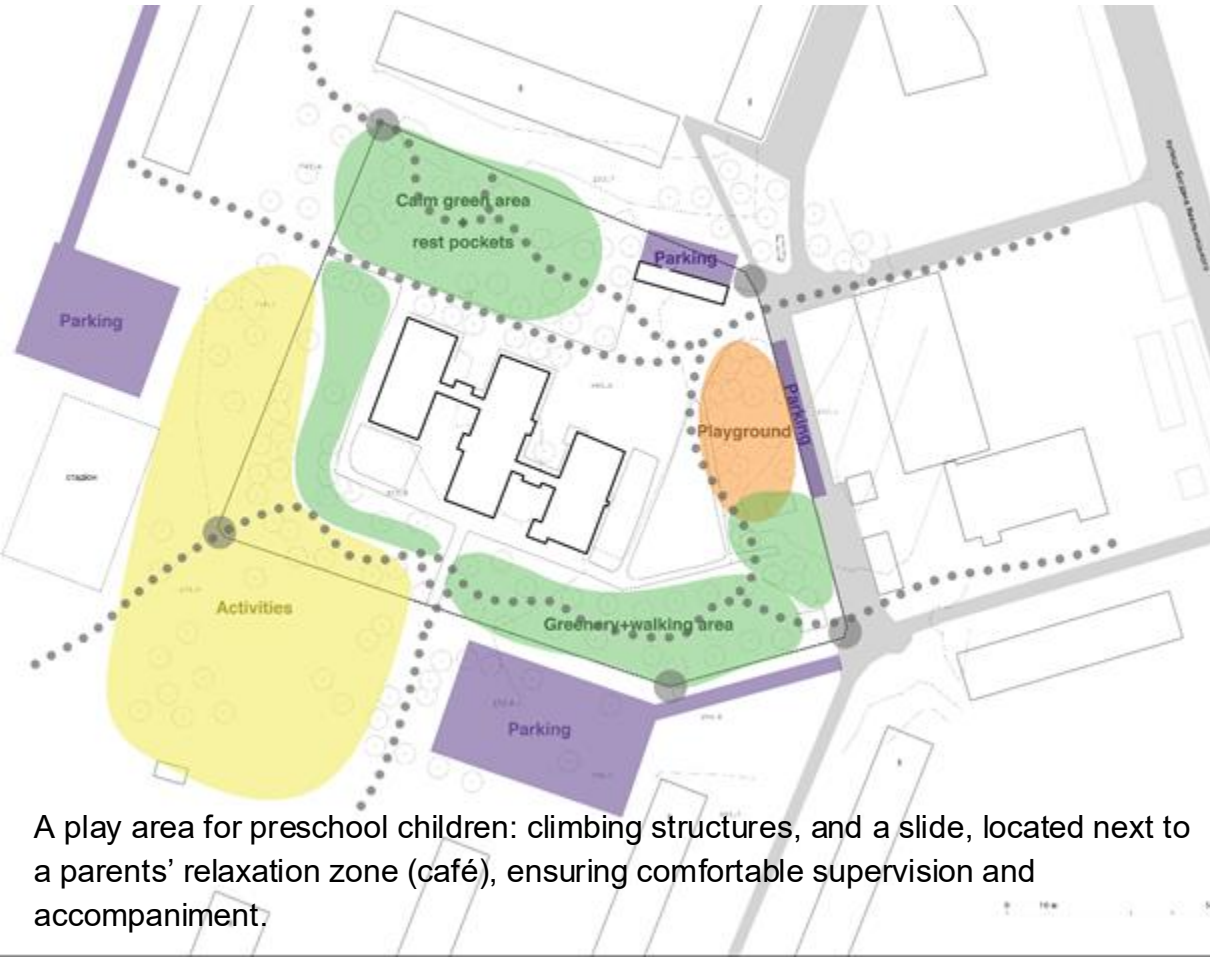
Quiet green zone



Tranquil green area: a pedestrian pathway integrated with small resting pockets — cozy spaces designed for quiet leisure, reading, and small group interactions



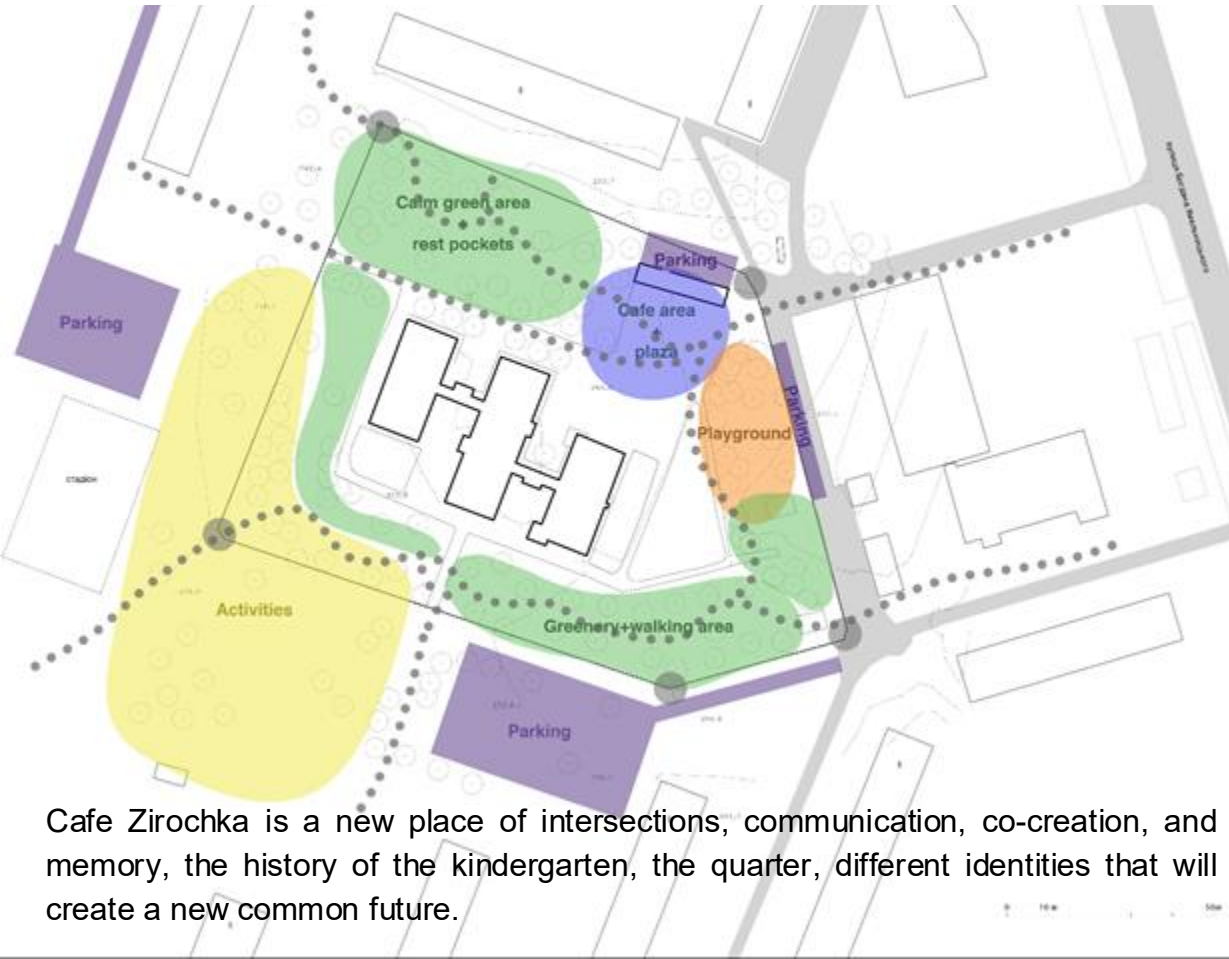
Playground (1 - 5 y.o.)



A play area for preschool children: climbing structures, and a slide, located next to a parents' relaxation zone (café), ensuring comfortable supervision and accompaniment.



Cafe «Zirochka»

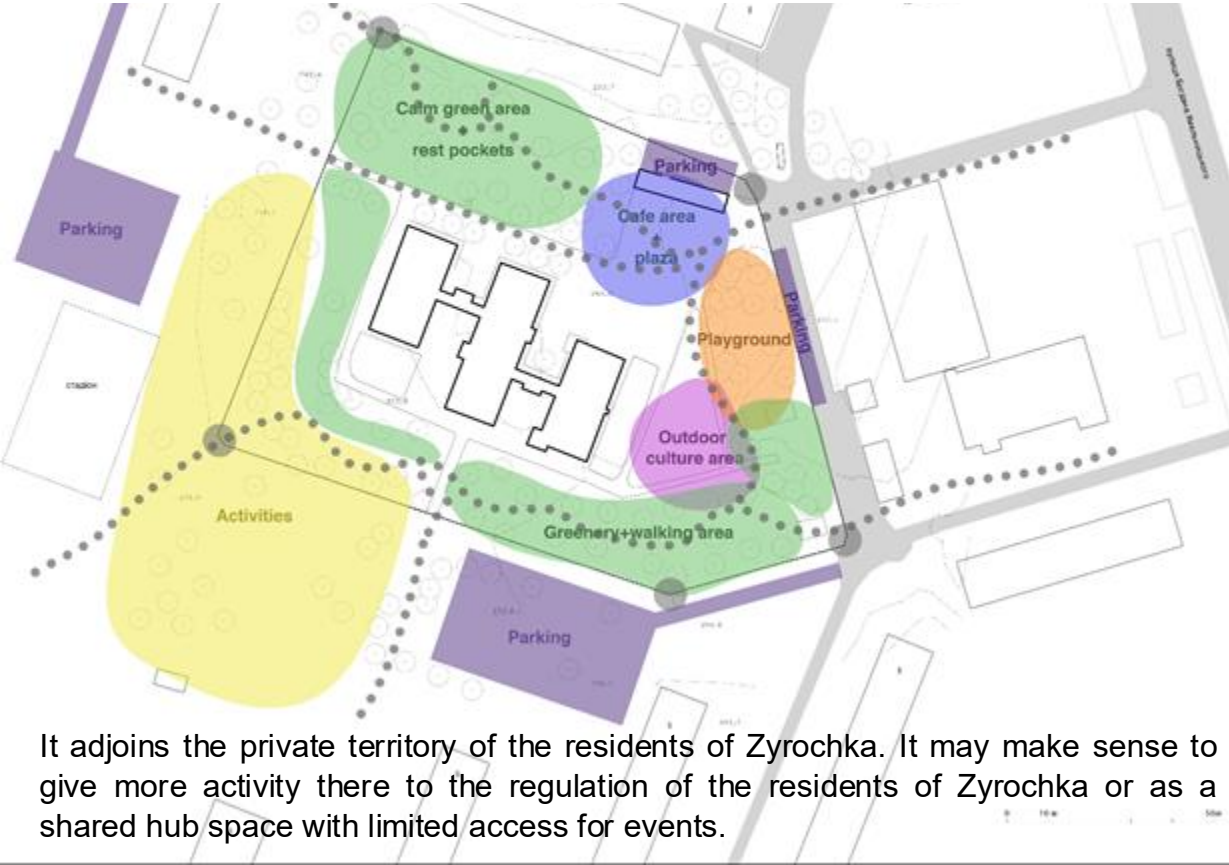


Cafe Zirochka is a new place of intersections, communication, co-creation, and memory, the history of the kindergarten, the quarter, different identities that will create a new common future.



Outdoor culture area

The cultural zone of the space is a summer multifunctional stage for concerts, watching films, presentations, physical activities.

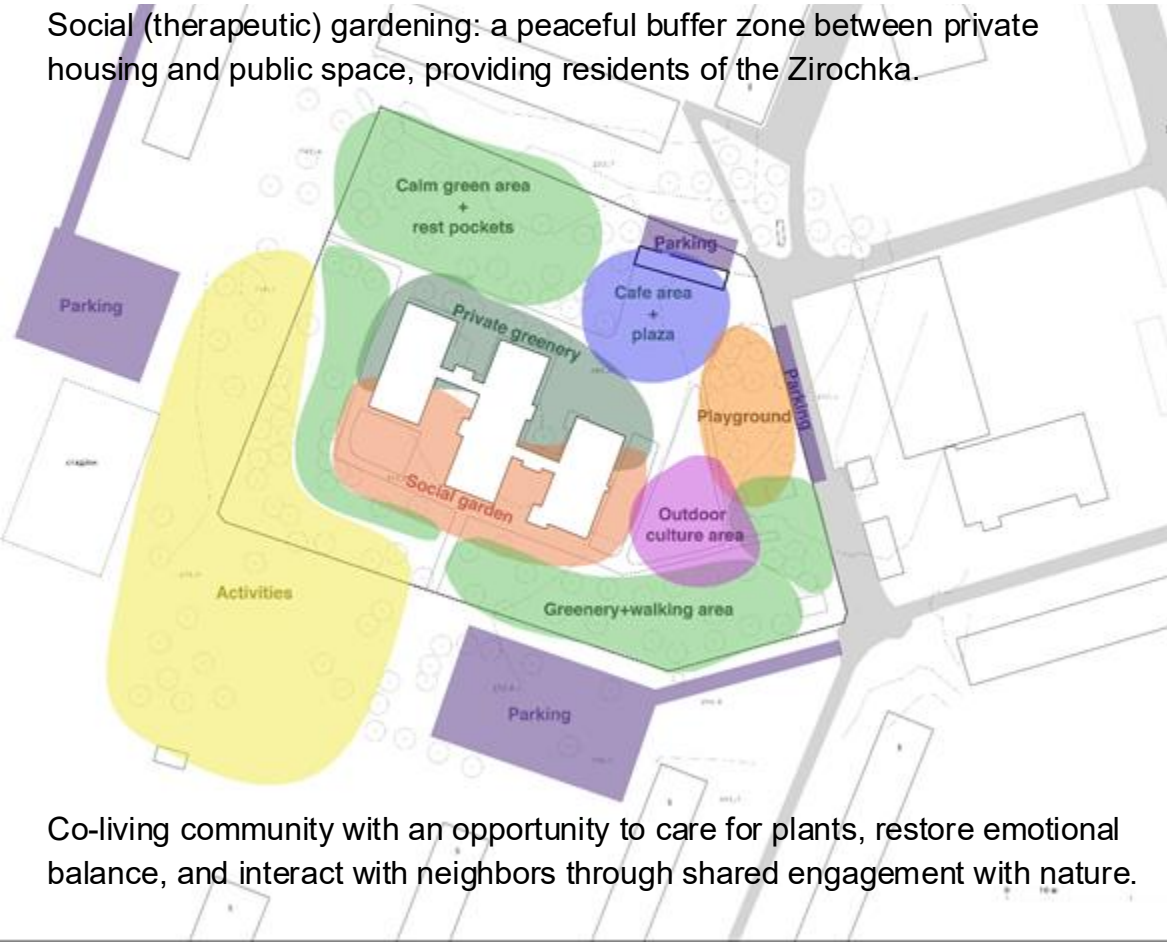


It adjoins the private territory of the residents of Zyrochka. It may make sense to give more activity there to the regulation of the residents of Zyrochka or as a shared hub space with limited access for events.



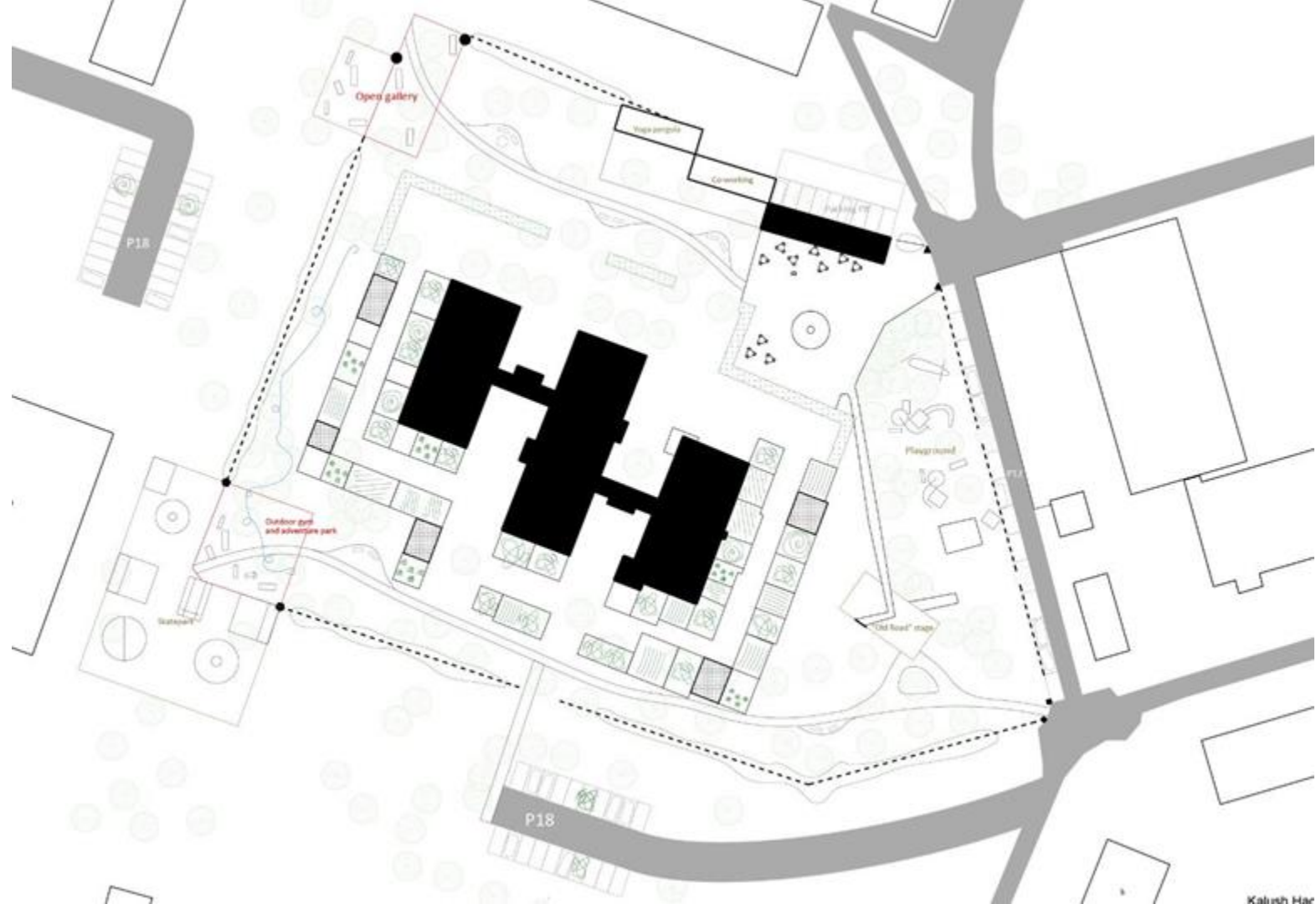
Social garden

Social (therapeutic) gardening: a peaceful buffer zone between private housing and public space, providing residents of the Zirochka.



Co-living community with an opportunity to care for plants, restore emotional balance, and interact with neighbors through shared engagement with nature.





Lead of team:

Rebecca Kontus

Members:

Ruuben-Jaan Rekkor

Olga Sukha

Viktoria Berbets

Artem Frediuk

Lidiia Hontar

Lesia Pitsak

Svitlana Naverska

Olga Yelanina

Valeriia Shevchenko



Зірочка

