

Tamsalu KODUHOOV

a Place to Stay
a Place to Return To

Rebecca Esop Tytti Tuomola
Veronika Jonina Eliisabet Toodo

15/06
2025



More than **just** a school yard

"KODUHOOV" IS A HOMEYARD FOR ALL:
regardless of age, interest, or background

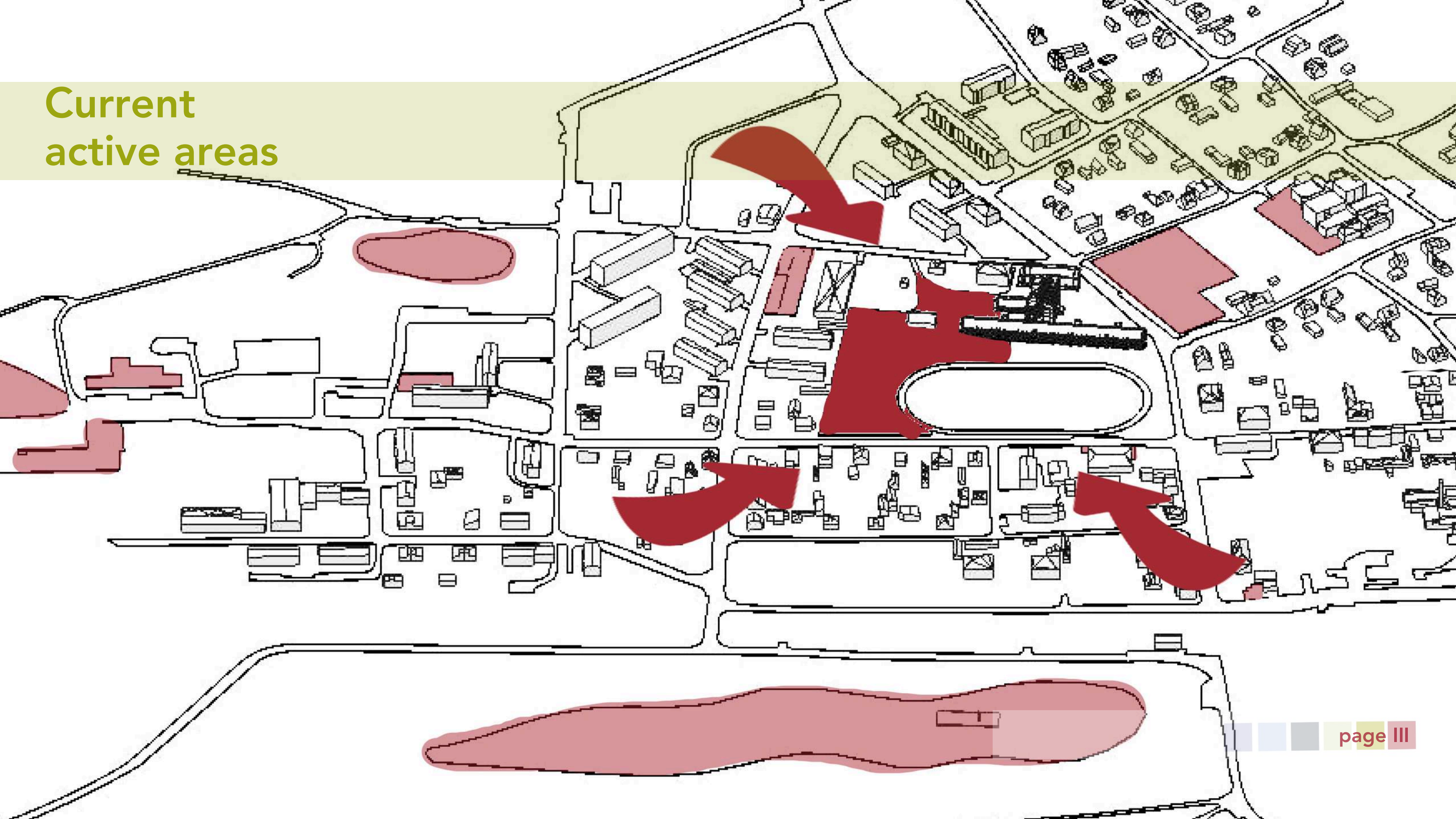
a gentle threshold between the individual
and the collective,
it invites connection

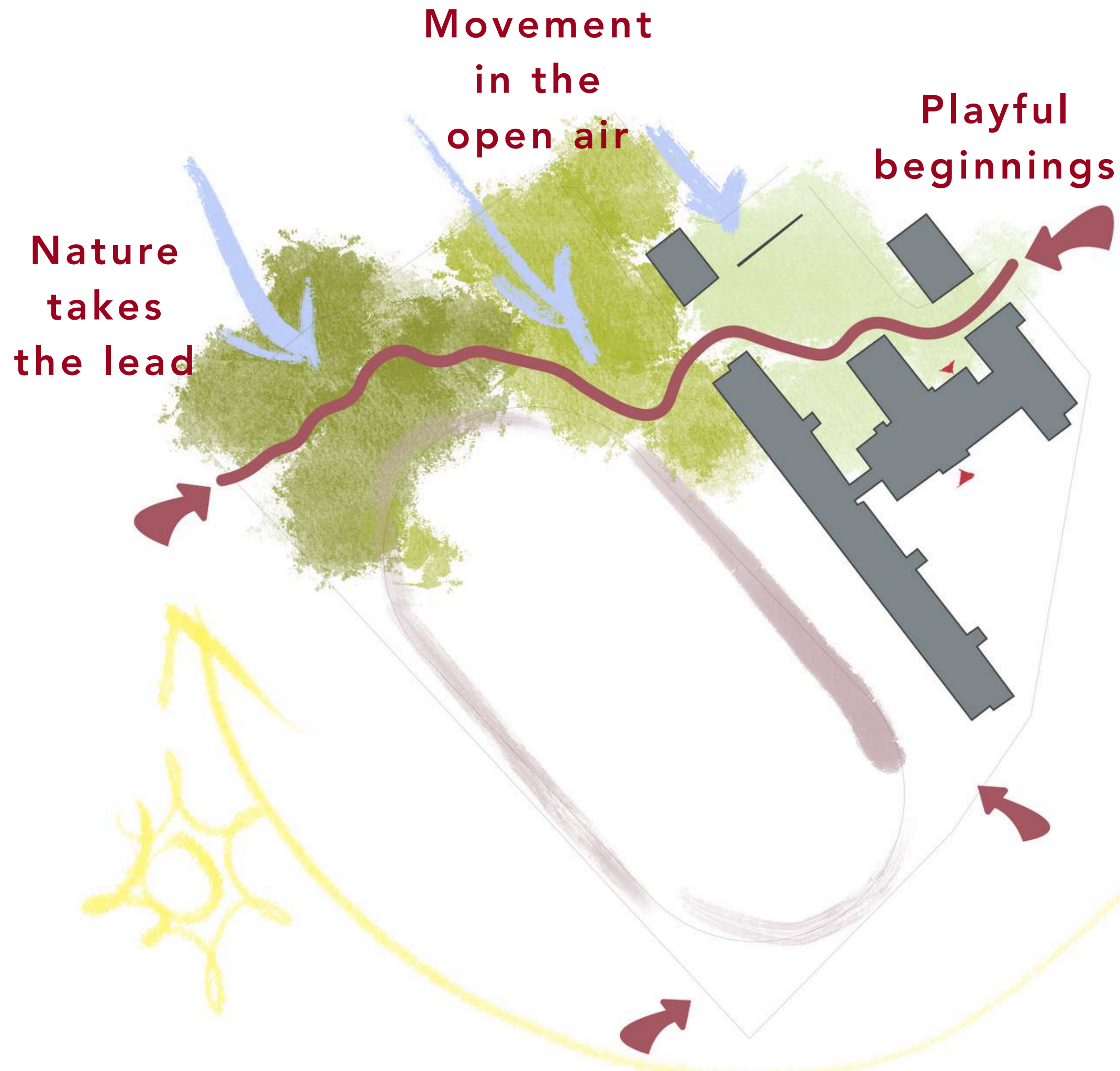
here, scattered paths converge
what was separate becomes shared:

individuals and groups becomes
a community



Current
active areas





Connections, paths, accessibility

A shortcut with soul —
not just a way through,
but a journey that invites
pause, play, and
presence

An open path weaving
together both sides of
the city, welcoming all
with ease and
accessibility



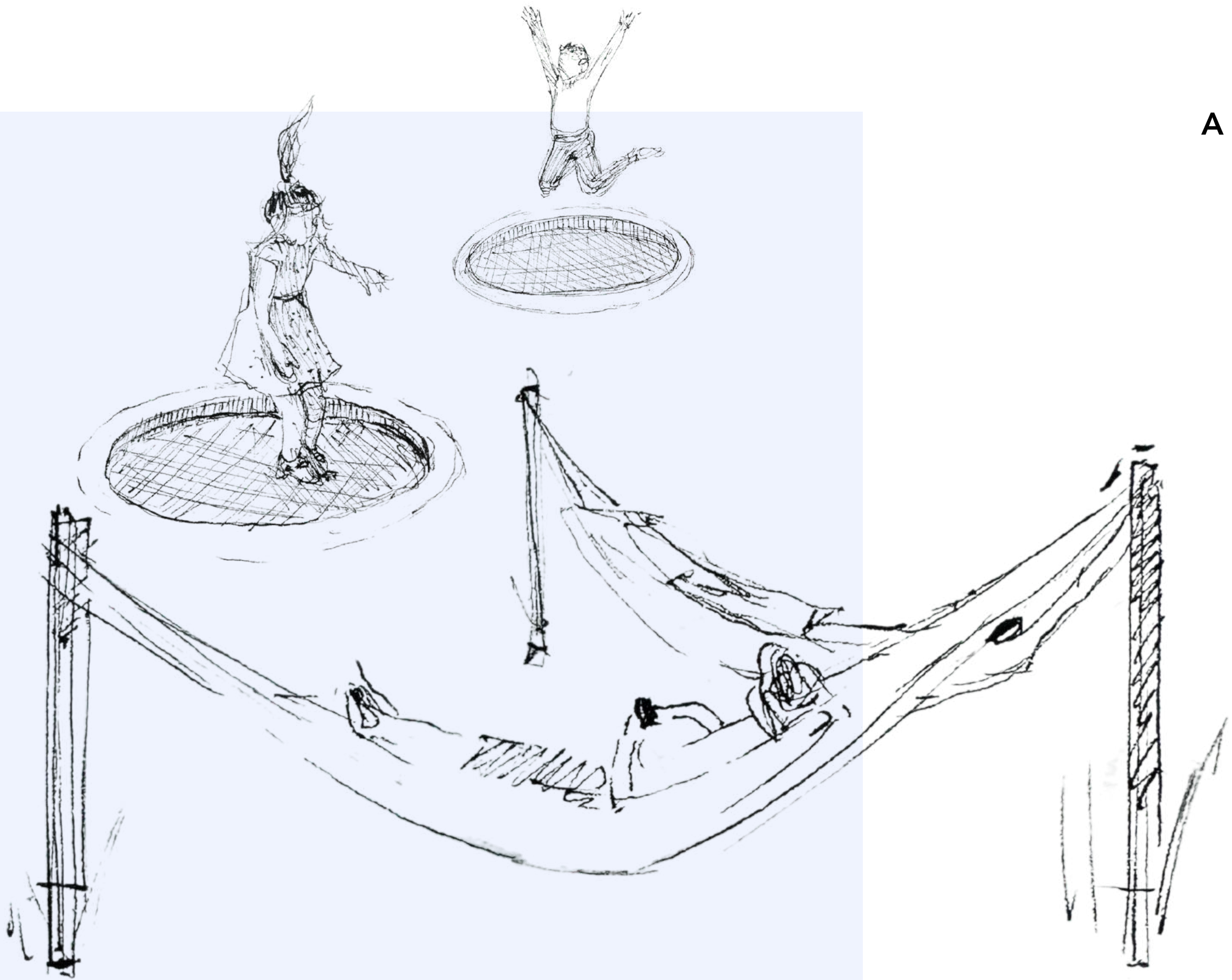
Site plan

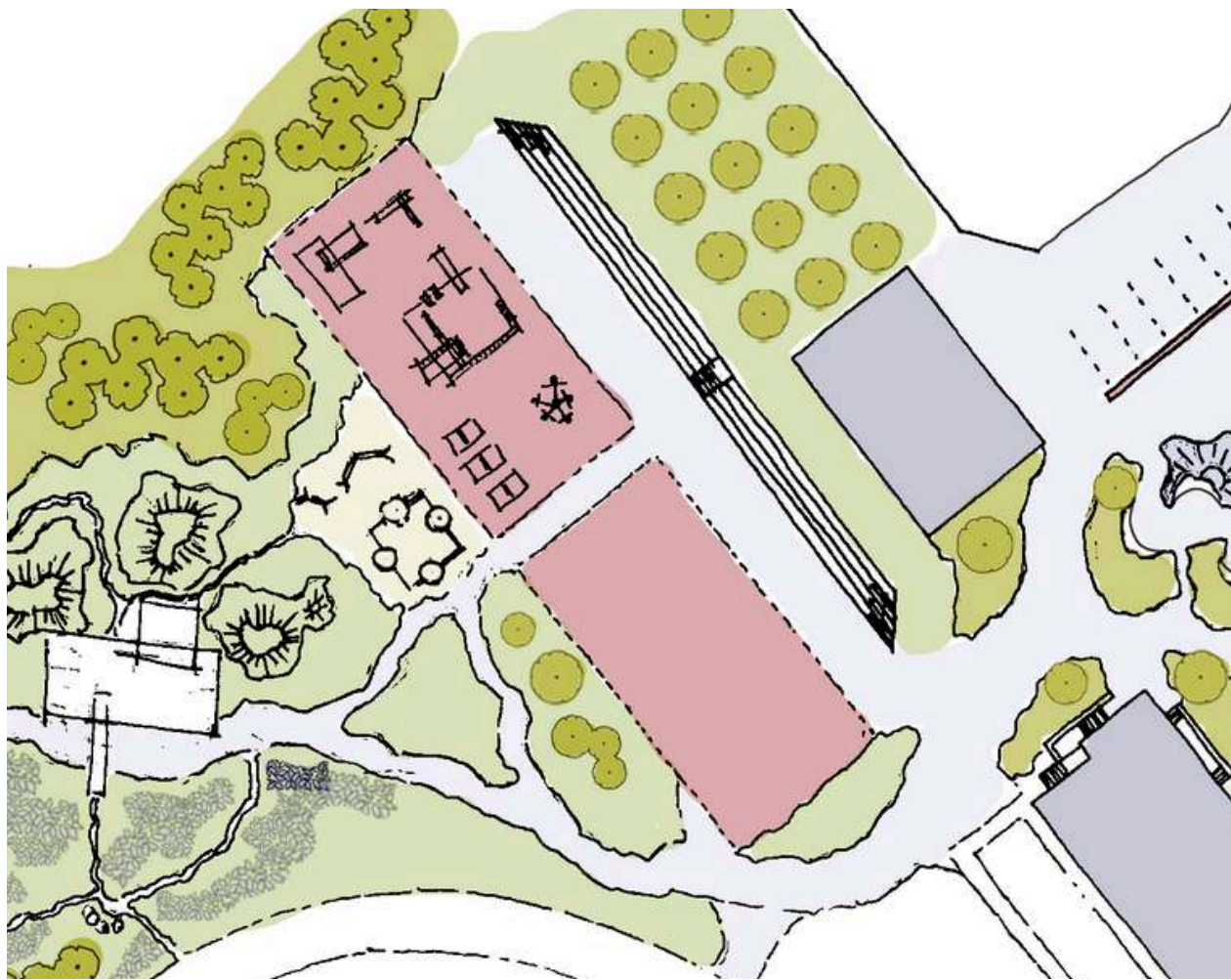
Playful beginnings

A compact, vibrant zone near the school's edge,
where younger children explore, and let their
imagination unfold

Close-knit creativity

Sheltered yet open





Movement in the open air

Play with purpose — the hills become part of the play, sparking imagination and offering new terrain to explore

For every age — diverse equipment ensures joyful movement for all, planting the seeds of lifelong activity



Nature takes the lead

The heart of togetherness — a vibrant community zone where all generations of Tamsalu come to gather, linger, and connect

More than a space — it's an atmosphere of welcome, where community isn't just found

it's made



Pavilion

from quiet reflection to lively events



From shared space to shared story

thank you

15/06
2025

Rebecca Esop Tytti Tuomola
Veronika Jonina Eliisabet Toodo

